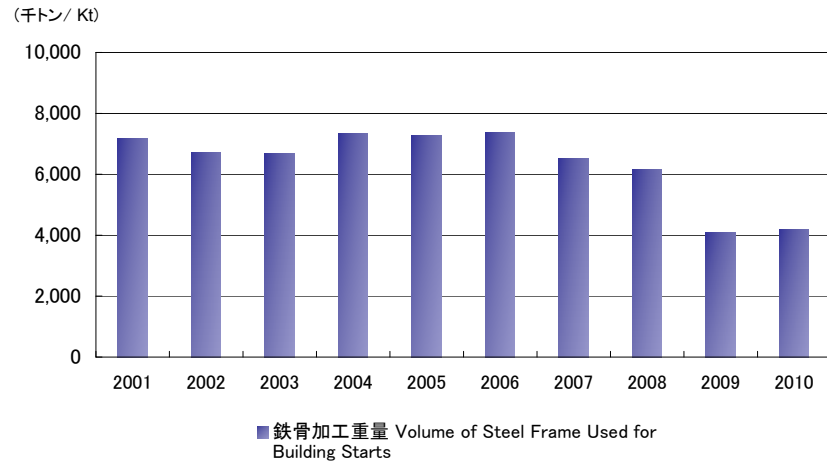


■鉄骨加工重量の推移
Volume of Steel Frame Used for Building Starts



鉄骨加工重量 Volume of Steel Frame Used for Building Starts

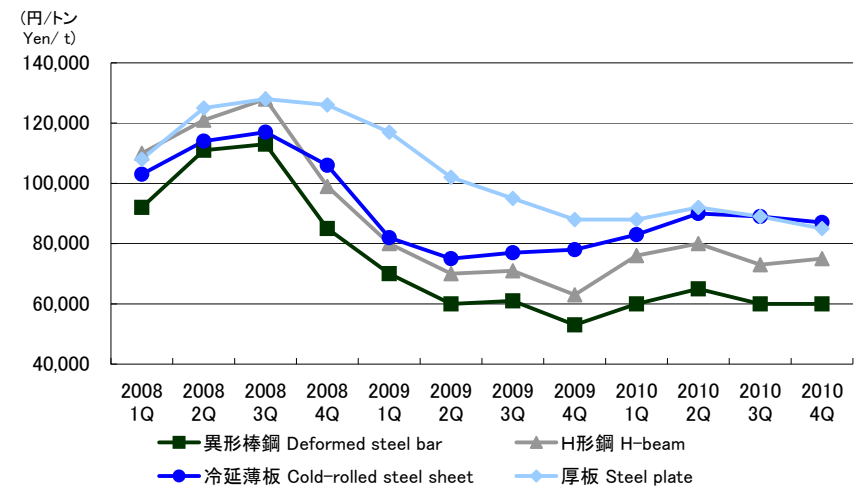
暦年	Calendar year	2001	2002	2003	2004	2005	2006	2007	2008	2009	2010
鉄骨加工重量	Volume of Steel Frame Used for Building Starts 千トン Kt	7,174	6,698	6,676	7,324	7,281	7,366	6,533	6,165	4,099	4,201

〔資料〕国土交通省:建設統計 建築物着工床面積構造別 (鉄骨造:㎡×100kg)+(鉄骨鉄筋コンクリート造:㎡×50kg)

〔Resource〕Ministry of Land, Infrastructure, Transport and Tourism (MLIT): Construction Statistics; Building Starts by Structure (Floor Area) (Steel Frame (S): ㎡×100kg)+(Steel Frame Reinforced Concrete (SRC): ㎡×50kg)

■鋼材価格の推移 Steel Product Prices

■鋼材価格の推移
Steel Product Prices



暦年	Calendar year	2008 1Q	2008 2Q	2008 3Q	2008 4Q	2009 1Q	2009 2Q	2009 3Q	2009 4Q	2010 1Q	2010 2Q	2010 3Q	2010 4Q
異形棒鋼	Deformed steel bar 円/トン Yen/t	92,000	111,000	113,000	85,000	70,000	60,000	61,000	53,000	60,000	65,000	60,000	60,000
H形鋼	H-beam 円/トン Yen/t	110,000	121,000	128,000	99,000	80,000	70,000	71,000	63,000	76,000	80,000	73,000	75,000
冷延薄板	Cold-rolled steel sheet 円/トン Yen/t	103,000	114,000	117,000	106,000	82,000	75,000	77,000	78,000	83,000	90,000	89,000	87,000
厚板	Steel plate 円/トン Yen/t	108,000	125,000	128,000	126,000	117,000	102,000	95,000	88,000	88,000	92,000	89,000	85,000

注:

1. 各製品の価格は、期末の東京高値を使用しています。

〔資料〕鉄鋼新聞社:鉄鋼・非鉄市中相場

〔Resource〕TEKKO SHIMBUN CORP.: Iron & steel market price (Tokyo / Higher prices)

Note:

1. The prices of products are quoted from the higher prices in the Tokyo market at the end of the period.